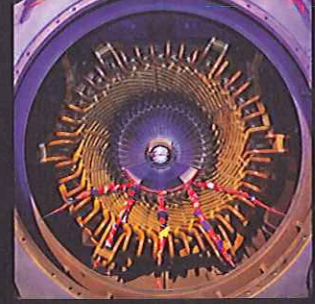


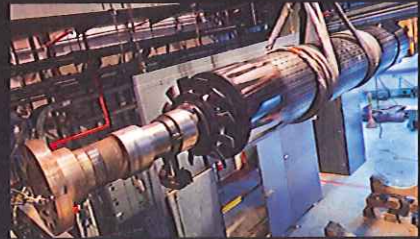
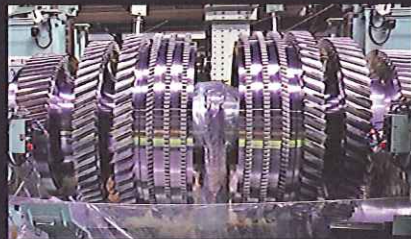
# SAVANNAH MACHINERY WORKS

Premier Service & Manufacturing Center for the Energy Industry



Mitsubishi Power Systems' Savannah Machinery Works is the comprehensive service & repair center for Gas Turbines, Steam Turbines, and Generator Rotors. This 116-acre, ISO certified facility houses on-site blast cleaning, NDE, metallurgical lab, and low & high speed balancing.

## ROTOR SERVICES



### ***Gas Turbines***

- Machine Services
- Blade / Diaphragm Replacement
- Rotor De-Stack / Stack
- Comprehensive Rotor Inspection (CRI)
- Diaphragm Repair

### ***Steam Turbines***

- New Rotor Manufacturing
- Machine Services
- Blade / Diaphragm Replacement
- Sealing Surface Restoration
- Stress Relief
- Weld Repair

### ***Generators***

- Electrical & Mechanical Inspection
- Machining Services
- Disassembly & Assembly Including Retaining Ring Replacement
- Clean Room for Rotor Rewinding & Repairs





# SAVANNAH MACHINERY WORKS

Premier Service & Manufacturing Center for the Energy Industry



Mitsubishi Power Systems' Savannah Machinery Works is the comprehensive service & repair center for Gas Turbines, Steam Turbines, and Generator Rotors. This 116-acre, ISO certified facility houses on-site blast cleaning, NDE, metallurgical lab, and low & high speed balancing.



## **Welding**

- Wheel Refurbishment
- Blade Attachment Repair
- Blade Attachment Upgrade
- Bearing Journal Restoration
- Seal Area Restoration
- Cladding

## **Stationaries**

- Nozzles, Diaphragms, & Castings
- Machining Services
- Seal Replacement
- Weld Repair
- Heat Treatment

## **Valves**

- Nuclear & Fossil
- Mechanical Inspection
- Component Replacement
- Weld Repair & Refurbishment
- Maintenance & Upgrade Programs
- Valve Swap / Seed Programs



## **Strategic Location**

- Located at I-95 and I-16
- Nearby Rail Infrastructure
- Deep Water Access via Ocean Terminal with 500-ton Heavy Lift Crane
- Global Reach

